



03/2020 - odd.de



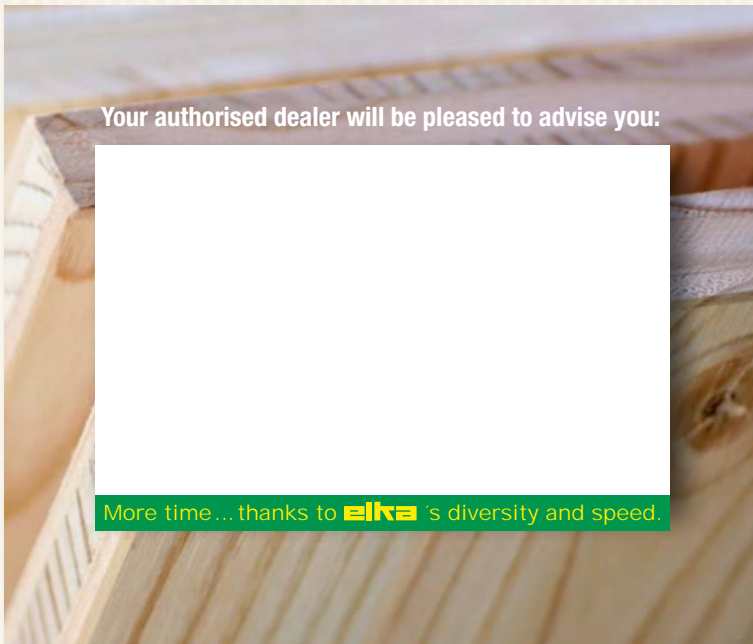
**elka-Holzwerke GmbH**  
Hochwaldstraße 44  
D-54497 Morbach

Phone: +49 65 33 / 9 56-333  
Fax: +49 65 33 / 9 56-330

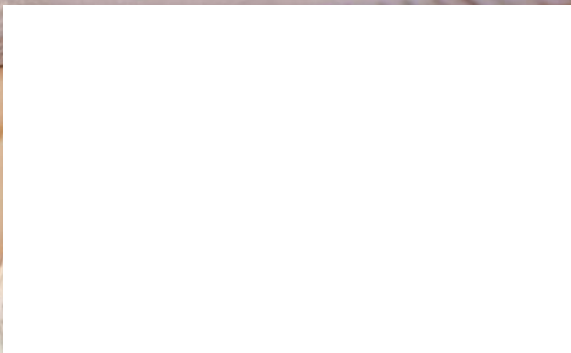
E-mail: [vertrieb@elka-holzwerke.de](mailto:vertrieb@elka-holzwerke.de)  
Internet: [www.elka-holzwerke.eu](http://www.elka-holzwerke.eu)



elka-Holzwerke GmbH is a company, which can look back on more than 100 years of company history. Technically qualified staff and modern manufacturing techniques guarantee the high quality standard of **elka**® branded products.



Your authorised dealer will be pleased to advise you:



More time... thanks to **elka**'s diversity and speed.

## Classification of Natural Wood Panels **vita**

**vita Natural Wood Panels** are manufactured in compliance with the requirements of EN 13353 and under factory monitoring as part of the CE marking according to EN 13986 **and are therefore approved by the building inspection authorities.**

### Classification of **vita** Natural Wood Panels SWP 2 / use class 2

**vita Natural Wood Panels** are perfect in outdoor climates for protection against direct weathering (wet areas), such as for use class 2 according to ENV 1995-1:1993 and biological hazard class 2 defined in accordance with EN 335-2:1992 (for example behind exterior cladding or under the roof); they can also be exposed to short-term weathering (for example during construction). The high panel quality is inspected every six months by eph Entwicklungs- und Prüflabor Holztechnologie (development and testing laboratory).

Use class 2 is characterized by a moisture content of the material that corresponds to a temperature of 20°C and a relative humidity of the surrounding air that only exceeds 85% for a few weeks per year.

### Load-bearing applications

For the use of **vita Natural Wood Panels** for load-bearing applications, the characteristic values for the calculation and dimensioning of timber structures can be found in EN 12369:2008 Part 3.

### Formaldehyde

The formaldehyde emission of the **vita Natural Wood Panel** is categorised as emission class E1E05 according to EN 13986.



**Premium panel**  
for healthy building & living



**GERMAN DESIGN AWARD WINNER 2018**  
AB/B, B/C



[www.blauer-engel.de/uz76](http://www.blauer-engel.de/uz76)



## The new low-emission **vita** Natural Wood Panel for healthy building and living.

Today multilayer solid wood panels must correspond diverse requirements, such as static properties, room air quality and the new national and European standards & directives.

The **vita Natural Wood Panel**, as a multilayer solid wood panel, complies with the emission requirements of a furniture panel, as well as the static values of a construction panel and the environmental requirements of sustainability. Their outstanding durability and high strength at low weight compared to other wood-based materials are impressive.

Selected timbers in **spruce and douglas fir** make the panels beautifully shaped unique pieces. The panel surface is perfected with **high-quality elka natural knothole patches**.



Conventional natural knothole patch     **vita** natural knothole patch

The wood comes exclusively from our own controlled production & sustainably managed forests (PEFC). **Upon customer request, vita can be delivered as PEFC and now also FSC certified or with Blue angel.**

**vita natural wood panels have excellent emission values.** Using the **elka** special bonding, the panel achieves a minimal formaldehyde emission level under 0.03 ppm. It is far below the current E1E05 requirements with extremely low VOC levels.

## vita products

The new generation of **vita natural wood panels** offers a wide range of different qualities, formats and thicknesses.

Natural Wood Panel <b>vita</b>	Formats (calculation dimension):								
Standard	505 x 205 cm cut to size on request possible								
Thicknesses of the outer layer in mm		4	5	5	5	9	5	9	9
Panel thicknesses in mm		16	19	22	27	27	34	42	50
Cover side / back side <b>spruce</b>	AB/B	●	●	●		●	●	●	
	B/C+		●	●	●	●	●	●	
	B/C	●	●	●	●	●	●	●	
	C+/C	●	●	●	●		●	●	● <sup>1)</sup>
Cover side / back side <b>Douglas fir</b> (Douglas fir - middle layer)	AB/B		●		●				
	AB/C		●		●				
	B/C		●		●				

1) format 500 x 205 cm

Natural wood panels with tongue-and-groove with chamfer	Formats (calculation dimension):								
	505 x 102,5 cm / 252,5 x 102,5 cm								
Thicknesses of the outer layers in mm			5	5					
Panel thicknesses in mm			19	22 <sup>2)</sup>					
4-side with tongue-and-groove with chamfer <b>spruce</b>	B/C		●						

2) Tongue and groove processing with chamfer in thickness 22 mm starting at 300 m<sup>2</sup>, possible special sizes / thicknesses on request

Gluing: AW 100 tested according to **EN 13354**

**Blue angel only AB/B, B/C, B/C+ on request**

## Applications

- ✓ High-quality furniture and interior design
- ✓ Timber engineering, commercial construction, renovations
- ✓ All types of cladding
- ✓ Office and business facilities
- ✓ Shop and exhibition construction
- ✓ Packaging
- ✓ Roofs and under-roof cladding

With the natural wood characteristics of the surfaces and the wide range of possible applications, **vita Natural Wood Panels** are a perfect choice for industrial production as well as for interior fitters, carpenters and do-it-yourselfers.

**The panel corresponds german AgBB guidelines or the French A+ category and has been certified „tested for harmful substances“.**

**The following qualities are available:**

**AB/B, B/C+, B/C, C+/C**

**AB/C, B/B, C/D on request**

**Special versions** in spruce and douglas fir and special formats, special construction, blanks, intermediate thicknesses - on request

**Are you already familiar with our **vita** Primed in white?**

**Then get in touch with us.**

