

Amazing Animals! Fact Sheet

Leopard Tortoise

This animal lives in warm countries in Africa.

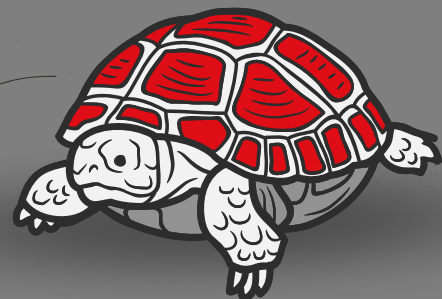
This creature eats grass and plants. It is an herbivore.

The female digs a hole with her back feet, drops the eggs, and then covers them with soil.

There are between 10 and 25 eggs laid in each clutch.

These eggs are a bit smaller than chicken eggs.

The babies look just like their parents when they hatch, only much smaller.



Amazing Animals! Fact Sheet

Ostrich

This animal belongs to the bird family, but you won't see them out of your window.

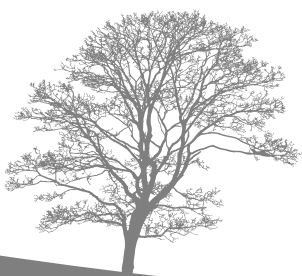
These birds are the largest in the world and they lay the largest eggs.

The female lays up to 12 eggs. Each one is as heavy as two bags of sugar.

The female incubates the eggs in the daytime and the male incubates them at night.

This chick doesn't break the eggshell with an egg tooth, like other chicks. It uses its legs.

Chicks from different nests often grow up together.



Amazing Animals! Fact Sheet

Corn Snake

This creature is a cold-blooded animal from the reptile family.

These animals live in North America.

Some people keep these colorful creatures as pets.

The female lays her eggs in a tree stump or in rotting plants, then leaves them.

The female lays between eight and sixteen soft eggs, which hatch after six to eight weeks.

The baby never meets its parents once it hatches from its egg.



Amazing Animals! Fact Sheet

Goldfish

This creature lives underwater. It has fins and gills.

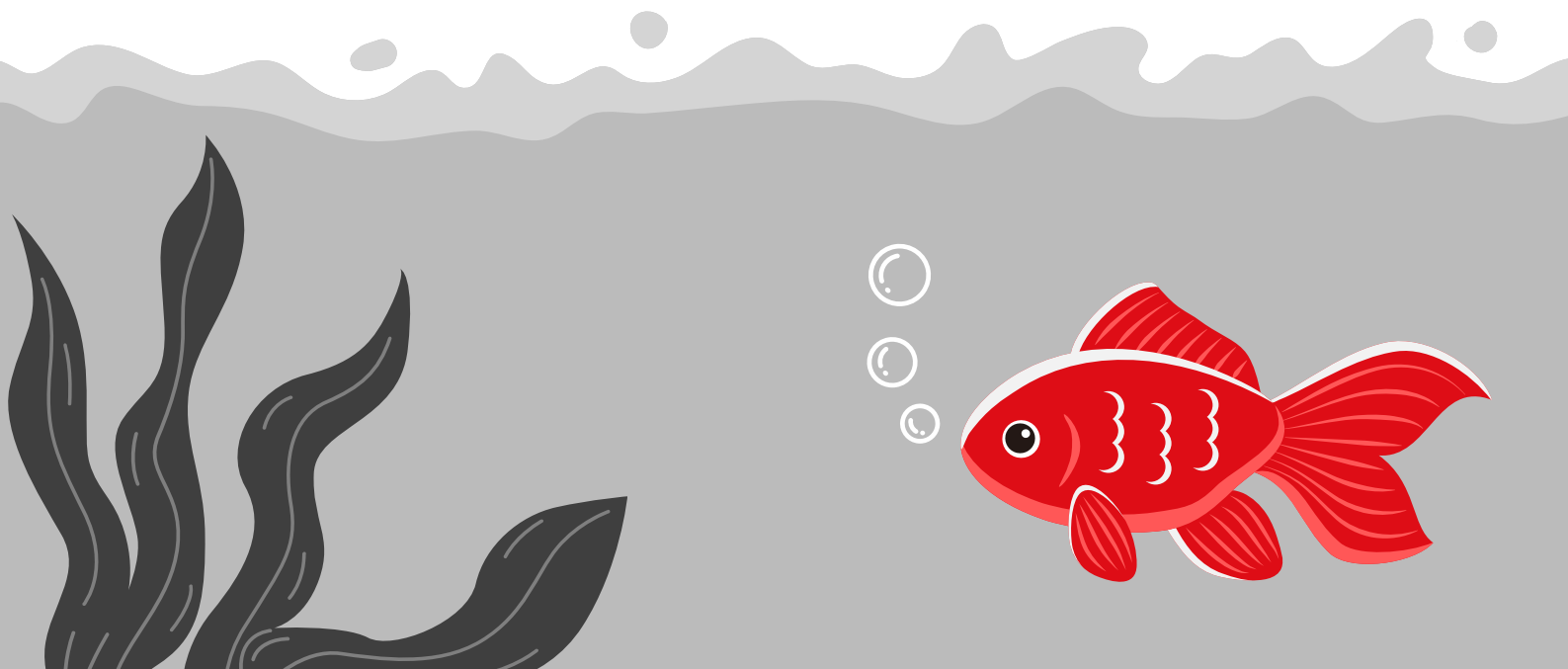
These popular pets are usually orange but can be white, yellow, red, or gold.

The female scatters hundreds of eggs in the water at a time.

The eggs are sticky and attach to plants in the water.

The baby takes just seven days to hatch. When it is born, it still has some egg yolk inside its body.

These fish are gray or green when they are young. They change color as they get older.



Amazing Animals! Fact Sheet

Seven-Spot Ladybird

This tiny creature has six legs and seven spots.

It is an insect that belongs to the beetle family.

It can be found in many countries, in parks, gardens, fields, and forests.

It lays batches of about 15 to 20 tiny eggs, often under a leaf.

The larvae hatch after six days but these babies look very different from the adults.

The larvae grow and change. The adults have wings and turn bright red.



Amazing Animals! Fact Sheet

Common Frog

This animal is born from an egg in the water then moves onto the land.

These creatures are amphibians. They are cold-blooded animals.

The female lays up to 1,000 eggs at a time!

Many of the eggs get eaten by other hungry creatures.

The babies look nothing like the adults. They don't even have legs when they hatch!

You might see these animals near ponds and swampy habitats.

